



chen moore and associates

www.chenmoore.com

“We are matching our areas of growth with the infrastructure needs of the State of Florida.”

Peter Moore, P.E., F.ASCE, ENV SP, LEED AP
President and CEO



The Art Walk, Coral Springs, FL

Founded in 1986, Chen Moore and Associates (CMA) specializes in civil engineering, water resources, water and sewer, landscape architecture, transportation, planning and irrigation, environmental and construction engineering services. The firm commits to providing responsive quality services while meeting the schedules and specific project needs of our clients. The firm has its headquarters in Fort Lauderdale, FL. CMA has regional offices in Miami, West Palm Beach, and Orlando (Maitland). CMA has project offices in Gainesville, Tampa, Sarasota, and Jacksonville.

At CMA, we best describe ourselves, our approach, and our priorities with these five words: Leadership, Excellence, Philanthropy, Community and Culture. CMA embraces the history and legacy of the firm set by Dr. Ben Chen, P.E. and is empowered by the vision set by its leadership team, led by President Peter M. Moore, P.E., F. ASCE, LEED AP, ENV SP. The firm continues to grow by striving for excellence in design, innovation, project management, and quality.

CMA continues to be focused on community through its commitment to philanthropy at all levels of the firm. Every office utilizes time and treasure to attend, contribute and lead in community and profession-related events throughout CMA’s geographic reach. The CMA Family culture is about quality and excellence in our professional work while contributing as a leader in our community in a fun working environment.



OUR CULTURE



Leadership
Excellence
Philanthropy
Community
Culture



OUR SERVICES



Water and Wastewater Master Planning
Pump Station Design and Rehabilitation
Water Supply, Treatment, and Distribution Design
Sanitary Sewer, Treatment and Distribution Design
Reclaimed Water Design
Trenchless Technology



Roadway Design and Streetscape
Aviation Design
Traffic Calming Design
Circulation & Roundabout Design
Pedestrian & Bicycle Pathway Design
Maintenance of Traffic



Environmental Restoration
Integrated Groundwater/Surface Water Modeling
Water Quality Modeling
Stormwater BMP and Pump Station Design
Stormwater Master Planning
Green Infrastructure Design
Flood Control Facility Planning and Design



Land Development
Land and Site Development
Transit Oriented Design
Urban Design
Master Planning
Site Planning and Rezoning
Sustainable Design



Landscape Architecture
Streetscape and Hardscape Design
Irrigation Design
Park and Recreation Design
Greenway and Trail Design
Arborist Services



Construction Management
Program Management
Construction Administration Services
Construction Engineering Inspections
Asset Management
FEMA Disaster Recovery Services



Planning and Landscape Architecture, Auburndale, FL

OUR FOUNDER



Dr. Ben Chen, P.E., BCEE
FOUNDER

Dr. Ben Chen, P.E., BCEE, is the founder of Chen Moore and Associates (formerly Chen and Associates Consulting Engineers, Inc.) and serves as Chairman of the Board for our firm's Board of Directors, where he is responsible for the long-term planning for the firm's future. Dr. Chen has had a wonderful career, working on some of the most significant utility and neighborhood improvement projects in South Florida. Dr. Chen has also had a long-standing history of being a leader in the community as an advocate for infrastructure needs throughout Florida, but also as a philanthropist throughout South Florida. He has served organizations in leadership positions of all types, including the Florida Engineering Society, Workforce One and on university advisory boards for Florida International University, Florida Atlantic University and St. Thomas University. Dr. Chen received his Master of Science and Bachelor of Science degrees in Civil and Sanitary Engineering from National Taiwan University before immigrating to the United States to obtain his Doctor of Philosophy Degree in Civil Engineering from the Virginia Polytechnic University.

OUR LEADER



Peter Moore, P.E., F.ASCE, ENV SP, LEED AP
PRESIDENT AND CEO

As the President of the firm for over a decade, Mr. Moore has helped to grow our firm from three staff when he joined in 1999 to over 60 staff today. Mr. Moore has served in numerous leadership positions in engineering organizations, including President of the Florida Engineering Society, President of the American Council of Engineering Companies (ACEC) of Florida and the Region 5 Director for the American Society of Civil Engineers. He volunteers with numerous collegiate engineering programs, including the University of Florida, Florida Atlantic University and Nova Southeastern University, and works with youth programs at the Fort Lauderdale Museum of Discovery and Science. Peter is a life member of Leadership Florida, the Florida Engineering Leadership Institute and Leadership Broward, where he is also a Past Chair of the Foundation. Mr. Moore also serves as a board member for Florida TaxWatch, an independent, nonpartisan, nonprofit taxpayer research institute and government watchdog for more than one-third of a century which works to improve the productivity and accountability of Florida government. Mr. Moore served on the board of the Sailboat Bend Civic Association for several years beginning in 2006 where he used his job skills to assist the neighborhood with traffic calming and construction concerns. Mr. Moore received his Master of Engineering degree in Civil Engineering and Bachelor of Science degree in Civil Engineering from the University of Florida.

OUR LEADERSHIP TEAM



**Peter Moore, P.E.,
F.ASCE, ENV SP, LEED AP**
PRESIDENT AND CEO



**Jason McClair, P.E., CFM,
LEED AP**
VICE PRESIDENT



**Jose L. Acosta, P.E.,
F.ASCE**
VICE PRESIDENT



Sean Dannelly, CPA
CFO



Led by President Peter Moore, the Executive Committee (ExCom) serves as the leadership structure for the firm. Along with Peter, the three other members lead and manage the three legs of the firm: Operations (Jason McClair), Financials (Sean Dannelly) and Business Development (Jose Acosta). The ExCom meets every few weeks to discuss each segment of the business, makes policy, monitors metrics in each area and makes decisions on the day to day management of the firm. They engage, interact and empower each of the office managers, directors and project managers of the firm to put them on the path to success.

OUR SHAREHOLDERS



Peter Moore



Jason McClair



Jose L. Acosta



Suzanne Dombrowski



Daniel Davila



Jennifer Smith



Safiya Brea



Cristobal Betancourt



Brent Whitfield



Eric Harrison



Gregory Mendez



Patrick Kaimrajh

OUR DIRECTORS

Cristobal Betancourt, RLA, AICP
Director of Landscape Architecture & Planning



Cristobal Betancourt, RLA, AICP is Director of Planning and Landscape Architecture for Chen Moore and Associates. He has experience providing planning and landscape architecture design solutions for public and private sector clients. Mr. Betancourt leads a team that has extensive experience on significant municipal streetscapes, parks (including master plans), transportation projects, campuses, facilities and land development projects throughout Florida (from northern Florida to Key West). Examples of such projects include the implementation of the Complete Streets Master Plan developed by the Broward County Metropolitan Planning Organization, master planning for SunTrax in Lakeland, segments of areas on the Florida Turnpike and the incorporation of an existing street in the pedestrianized Lincoln Road Mall in South Beach. In addition, Mr. Betancourt is the principal for our LA Department's efforts for the Florida Department of Transportation (FDOT) throughout the state. He and his team are well versed in designing for multiple modes of transportation including air, rail, roadway, and multimodal transit facilities. He has been the Project or Task Manager for districtwide landscape contracts, highway beautification projects and LAP funded projects. Mr. Betancourt completed his post-graduate studies in urban design at the Royal Danish Academy of Fine Arts, School of Architecture and his Bachelor of Science degree in Landscape Architecture from Cornell University.

Brent Whitfield, P.E., ENV SP
Director of Water Resources



Brent Whitfield, P.E., ENV SP is the Director of Water Resources for CMA. Mr. Whitfield has worked for a variety of public sector clients at the City, County and State levels. His experience includes tasks as varied as hydrologic and hydraulic modeling related to environmental and flood protection studies and detailed engineering design and construction oversight for roadway, water, sewer, and stormwater infrastructure. Mr. Whitfield has provided infrastructure solutions in various settings from residential neighborhoods to commercial airports. As a life-long resident of Florida, Mr. Whitfield has maintained a commitment to serving the community both professionally and personally serving as an appointed board member for a municipal advisory board with maintaining involvement in the American Society of Civil Engineers (ASCE), the Florida Engineering Society (FES) and Leadership Florida. He serves as the chair of the water resources committee for the American Council of Engineering Companies (ACEC) of Florida. Mr. Whitfield holds a Bachelor of Science Degree and a Master of Science Degree in Civil Engineering from the University of Florida.



OUR WORK



Key West Pedestrian Bridge, Key West, FL



City Park Master Plan, Oakland Park, FL



48" Emergency ByPass, Fort Lauderdale, FL

Sunset Islands III and IV NIPs, Miami Beach, FL (Left)



Fort Lauderdale Emergency Forcemain Rehabilitation, Fort Lauderdale, FL



Emergency 48" Forcemain

CMA has worked with public, semi-public and private clients to provide a wide range of water and sanitary sewer engineering services including large-scale master planning and modeling, existing system assessments, design and rehabilitation from the level of a basis of design report through design, permitting and construction administration services. CMA has also undertaken and completed several international water and wastewater projects in the Caribbean and in Central America. CMA is among the most diverse and experienced firms with utility engineering projects in Florida.

Utility totals over the last 10 years:

- Over 500 miles of pressure pipe
- Over 100 miles of gravity sewer
- Over 250 pump stations
- Large diameter pipe in FDOT ROW (24" to 72")
- Over 60 directional drills



Pompano Beach, FL



UAZ Watermain Installation, Broward County, FL

WATER AND WASTEWATER MODELING

No design can be undertaken without proper planning, and no planning can take place without a thorough understanding of system dynamics through the creation and calibration of a true hydraulic model. CMA's experience with hydraulic models goes back to the original KY Pipes modeling software. Today, CMA selects the appropriate model based on the desired analysis and client familiarity. Depending on the available information and desired outcomes, CMA has created steady-state and extended period simulation (EPS) models inclusive of hydraulic information and water quality.

Recently, CMA completed a modeling project for Palm Beach County Water Utilities Department focused on the determination of system adequacy in terms of fire flow, water age, and minimum hydraulic performance conditions. The efforts completed included a summary of the existing potable water system facilities, water demand conditions evaluation, hydraulic model calibration efforts, hydraulic model results and evaluation, water quality evaluation, valve criticality assessment, and pipe break analysis of water main aerial crossings. Special conditions included evaluation of additional water demands for bulk users, and evaluation of water treatment plants (WTPs) out of service, and WTP area of influence. This system consisted of over 30,000 nodes and 35,000 pipes representing over 2,250 miles of pipeline.



Pompano NC2-1 Drainage Improvements, Pompano Beach, FL



Emergency 30" Forcemain, Fort Lauderdale, FL

TRENCHLESS TECHNOLOGIES

All professions are evolving, and the methodology for installations of pipelines is no different. In dense urban areas; crossings of limited access highways and open water bodies; or crossing of areas with difficult conditions, including high groundwater; installation via traditional open-cut methodologies are typically more costly and take a much longer duration. For decades, CMA has utilized liners and pipe bursting for gravity sewer applications, but the transfer of technologies from the oil and gas industry to the water and sewer industry has yielded the most transformation in applications for pressure pipe.

A prime example project was the Go Big Go Fast 30" Force Main Rehabilitation and Replacement project for the City of Fort Lauderdale. Split into four phases, this project utilized a blend of HDD and Swagelining to turn over three miles of a single failing 30" force main into two redundant lines with numerous bypass connections. This project utilized four HDDs, three of which were in dense urban areas and the other that crossed a navigable waterway, to build redundant infrastructure. This allowed the team to swageline the existing pipe that had experienced a non-traditional failure and was not viable for CIPP. Constructed in only ten months, including a demobilization for a hurricane, the project received many awards.



Water is a critical resource in Florida fundamental to the residents, the natural environment, the agricultural economy and recreational opportunities. Balancing the demands of a growing population with the need to protect the natural ecology of rivers, lakes, wetlands and estuaries require thoughtful planning and infrastructure investment. CMA is committed to providing innovative solutions that help manage and protect Florida's most important resource.

SEA LEVEL RISE

CMA applies a holistic approach to stormwater infrastructure, considering existing facilities, water quality, resiliency, and Sea Level Rise. Following the Urban Land Institute (ULI) recent recommendation for stormwater improvements in the face of Sea Level Rise, CMA will work with the City to incorporate not only "gray" infrastructure, but also incorporate "blue" and "green" infrastructure. "Gray" refers to engineered components, such as raising roads, drainage inlets, pipes, drainage wells, outfalls, and potentially pump stations. The "blue" and "green" infrastructure refers to natural methods of stormwater treatment and attenuation, such as bioswales, curbed rain gardens, and living shorelines. These components are additional tools in the toolbox to reduce rainfall runoff and add water quality treatment. In addition to building resiliency and sustainability into the stormwater system, items like bioswales reduce the heat island effect common to areas with large amounts of impervious area.

FLOOD PROTECTION

As sea level rise and increased rainfall intensity has become a more evident driver of flooding, CMA has responded with infrastructure designs that improve resiliency within communities. In the City of Miami Beach, we provided engineering and construction administration on a design-build project for the Sunset Islands that elevated roadways and constructed stormwater pump stations to provide positive discharge and access to critical facilities even as the tailwater elevation rises. We have also provided engineering solutions to conveyance canals, bank stabilization, large culverts and water control structures. Each of these facilities are critical components of the infrastructure that provides flood protection in our communities.



WATER RESOURCES



Miami Dade Water and Sewer Department (MDWASD) Pump Station #0614 Improvements, Miami, FL

The growth of Florida has long been supported by the ability of our built infrastructure to mitigate excess water in times of flooding and manage water supply in times of drought. CMA's experience demonstrates the design of innovative flood protection solutions even as development increases runoff volumes and sea level rise decreases available soil storage and discharge availability. As a trusted advisor to many utilities, we also recognize the value of alternative water supply projects to optimize the use of a limited resource.

STORMWATER MANAGEMENT: SITE SPECIFIC LOW IMPACT DESIGN

Historically, the practice of civil engineering has focused on designing drainage systems that discharge excess runoff in a manner that protects on-site improvements and prevents negative impacts downstream. In recent years, there has been a recognition that a more comprehensive approach to managing stormwater provides additional benefits including improving water quality and promoting aquifer recharge for water supply. At CMA, we leverage the in-house expertise of our Landscape Architecture Department to promote the use of Low Impact Design (LID) techniques that reduce impervious surfaces and promote natural attenuation and infiltration prior to conveyance and discharge. On multiple municipal projects, our design team has identified opportunities to reduce pavement widths on roadway corridors and increase planting spaces. On every project, our design team looks for opportunities to incorporate Best Management Practices (BMPs) and pollution control devices to promote sustainability and resilience.

STORMWATER MANAGEMENT: BASIN SCALE

CMA has prepared basin scale stormwater master plans for multiple municipalities and jurisdictional agencies. This experience has allowed us to understand how regional systems at the basin scale interact with local systems at the neighborhood scale. Our staff utilizes a wide array of hydrologic and hydraulic modeling tools to simulate the regional canals for representation of the tailwater conditions that secondary stormwater facilities rely on. These modeling tools are also utilized to simulate the conveyance capacity and available storage at the neighborhood scale. Over the years we have learned that although the development of a hydrologic and hydraulic model is critical for a good plan, it is not the most important deliverable. The true value of any stormwater master plan is an actionable plan for implementing practical improvements. Our decades of experience designing and constructing neighborhood improvement projects have served us well in developing conceptual plans and cost estimates tailored for use in Capital Improvement Plans that guide future programming for each municipality.



WATER RESOURCES



Sunset Islands III and IV NIPs, Miami Beach, FL

Evaluating the existing level of service for a stormwater management system and the impact of proposed improvements is very complex in locations with limited topographic relief and high water tables. CMA uses sophisticated groundwater/surfacewater integrated modeling tools to recreate the existing physical environment. Once calibrated, these models allow CMA to perform scenario evaluations for hundreds of different combinations of environmental conditions and infrastructure improvements. This approach allows CMA to provide precise recommendations for the best use of public funds for managing water and providing a high level of service to residents.

FLOOD PROTECTION

As sea level rise and increased rainfall intensity has become a more evident driver of flooding, CMA has responded with infrastructure designs that improve resiliency within communities. In the City of Miami Beach, we provided engineering and construction administration on a design-build project for the Sunset Islands that elevated roadways and constructed stormwater pump stations to provide positive discharge and access to critical facilities even as the tailwater elevation rises. We have also provided engineering solutions to conveyance canals, bank stabilization, large culverts and water control structures. Each of these facilities are critical components of the infrastructure that provides flood protection in our communities

WATER QUALITY

Since 1972 the Clean Water Act has facilitated the implementation of the National Pollutant Discharge Elimination System (NPDES) program in communities throughout the country. CMA has extensive experience managing the NPDES program for the various municipalities and developing the necessary reports to ensure compliance. This experience allows us to understand the value of making sure any data collected for drainage infrastructure or maintenance programs should be formatted in a manner that seamlessly integrates with documentation requirements.



WATER RESOURCES



Doral Glades Park, Doral, FL



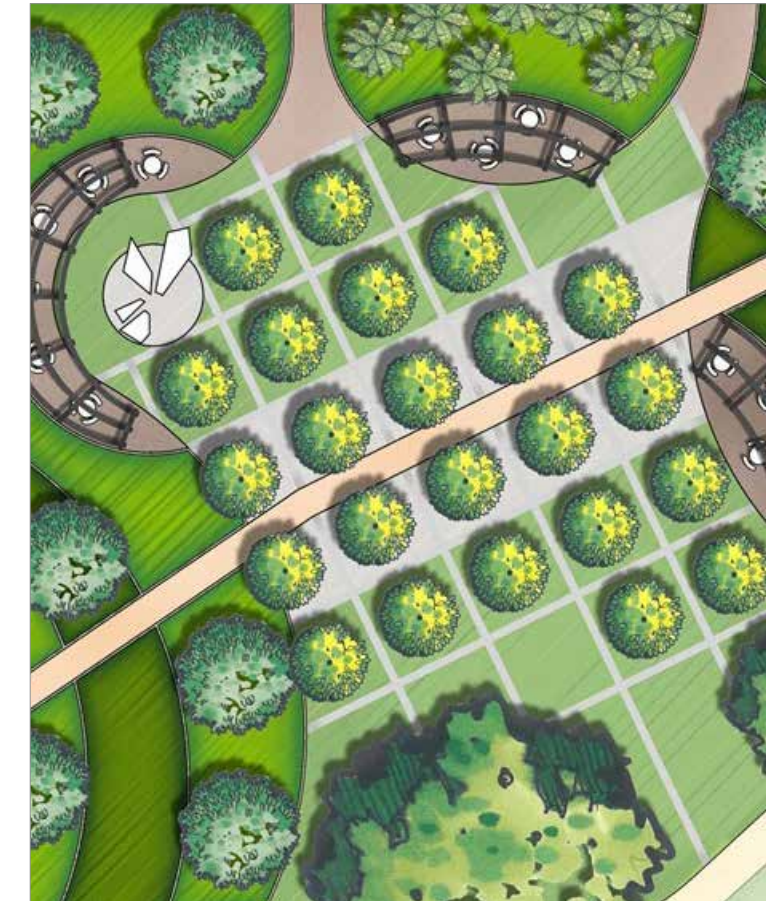
Mini-Park, Miami, FL

The American Society of Landscape Architects defines landscape architects as analyzing, planning, designing, managing, and nurturing the built and natural environments. CMA's Landscape Architecture studio focuses on contributing to a community's health and well-being; equity and inclusion; economic development; and sustainability and resilience. Our studio works with all levels of government, institutions, and private developers to create quality outdoor experiences for end-users.

"Landscape architects analyze, plan, design, manage, and nurture the built and natural environments."



West End Park, Miami, FL



Florida Atlantic University, Boca Raton, FL

Public outreach is at the heart of the design process for transformational parks and public spaces and is one of three key factors that lead to the creation of “High Performance Public Spaces” that generate economic, environmental, and social sustainability benefits for their local community. We use a mixed methods approach to determining residents’ needs, desires, and priorities, including on-site and city-wide surveys, public open houses, stakeholder interviews, focus group meetings, on-line engagement, and other techniques. We don’t just wait for residents to come to us; we “go to where the people are” including neighborhoods, condominiums, churches, schools, and other gathering spaces. Coordinating with a City, we encourage activation of a park during the design process that includes programs and activities such as yoga, food trucks, movies in the park, etc. to gauge public reaction, understand how space can be inhabited, and gain real-time feedback as we develop our design concepts.



North Shore Bandshell Park, Miami Beach, FL



Veteran's Wayside Park, Pinecrest, FL



The Art Walk, Coral Springs, FL



Euclid Avenue, Miami Beach, FL

CMA's Landscape Architecture and Planning studio focuses on developing vibrant public spaces to provide improved quality of life. Great public spaces play vital roles in a community's resilience. Public spaces comprise the network of streets, plazas, parks, and places in our communities that form the public realm. These are the places where we spend time with friends, commute to work or school, exercise, play, form our social bonds, and live our public lives. CMA commits to designing public spaces contributing to a community's health and well-being; equity and inclusion; economic development; and sustainability and resilience.

"Public spaces comprise the network of streets, plazas, parks, and places in our communities that form the public realm."



Concept - St. Thomas, USVI



Moore's Creek Linear Park Veterans Housing Project, Fort Pierce, FL

Urban parks are for people. In urban neighborhoods, their success can be measured by counting the number of people who use them. That's what tells us whether parks are meeting the needs of the surrounding community. People need reasons to be in a park, whether that's a great playground, a place for relaxing or playing games, an interesting performance, or simply a place to connect with neighbors. That's why we begin our park development process by asking those communities what they want to do in the park, getting input and feedback on hundreds of possibilities.



South Pointe I-IV, Miami Beach, FL



JM Enterprises - Deerfield Beach, FL



Brightline Station, Fort Lauderdale, FL



City of Margate Roundabout, Margate, FL

The most successful transportation projects require an engineering design leader with the expertise, knowledge, experience and relationships to achieve the pragmatic success our communities require. CMA is an expert at delivering public infrastructure transportation projects. CMA's portfolio includes the following: roadways and highway design; aviation projects in both international and regional airports; transit and train stations; transit-oriented development; hardscape projects and parking lots.



Highland Drive Roundabout, North Miami Beach, FL



Pembroke Road/I-75 Overpass, Pembroke Pines, FL



Fort Lauderdale International Airport South Runway, Fort Lauderdale, FL



SR 50 Interchange - Florida Turnpike



Worth Avenue Infrastructure Improvements, West Palm Beach, FL



UAZ Neighborhood Improvement Projects, Broward County, FL

CMA's focus for every construction project is to bring value and assist the team to successfully construct a project that meets the expectations of the Owner and the public. The health, safety and welfare of the public is at the forefront of every project CMA designs and serves in the role of construction engineering inspection (CEI) or construction administration. CMA strongly believes in its operational procedures in the field via detailed reports, communications and technology. This effort is supported by a robust Quality Assurance/Quality Control program. Aside from CEI, CMA offers our constructability review services to identify key concerns prior to our projects to our clients mitigate risk.



The Art Walk Box Culvert, Coral Springs, FL



Central Bayshore Right-of-Way Improvement, Miami Beach, FL



UAZ Neighborhood Improvement Projects, Broward County, FL



Underground Utility Relocation, Riviera Beach, FL



OUR MARKETS



Highland Drive Roundabout, North Miami Beach, FL



Brightline Station, West Palm Beach, FL

State Road A1A and Commercial Boulevard, Lauderdale-by-the-Sea, FL (Left)



Sunset Islands III and IV NIPs, Miami Beach, FL



MARKETS

utility engineering



CMA has worked with public, semi-public and private clients to provide a wide range of water and sanitary sewer engineering services including large-scale master planning and modeling, existing system assessments, design and rehabilitation from the level of a basis of design report through design, permitting and construction administration services. CMA has completed the following over the last decade: over 500mi pressure pipe; over 100mi gravity sewer; over 250 pump stations; large diameter pipe in FDOT ROW (24" to 72"); over 20 directional drills. CMA has also undertaken and completed several international water and wastewater projects in the Caribbean and in Central America.

CMA utilizes a variety of hydraulic models based on desired analysis and client familiarity. Examples include:

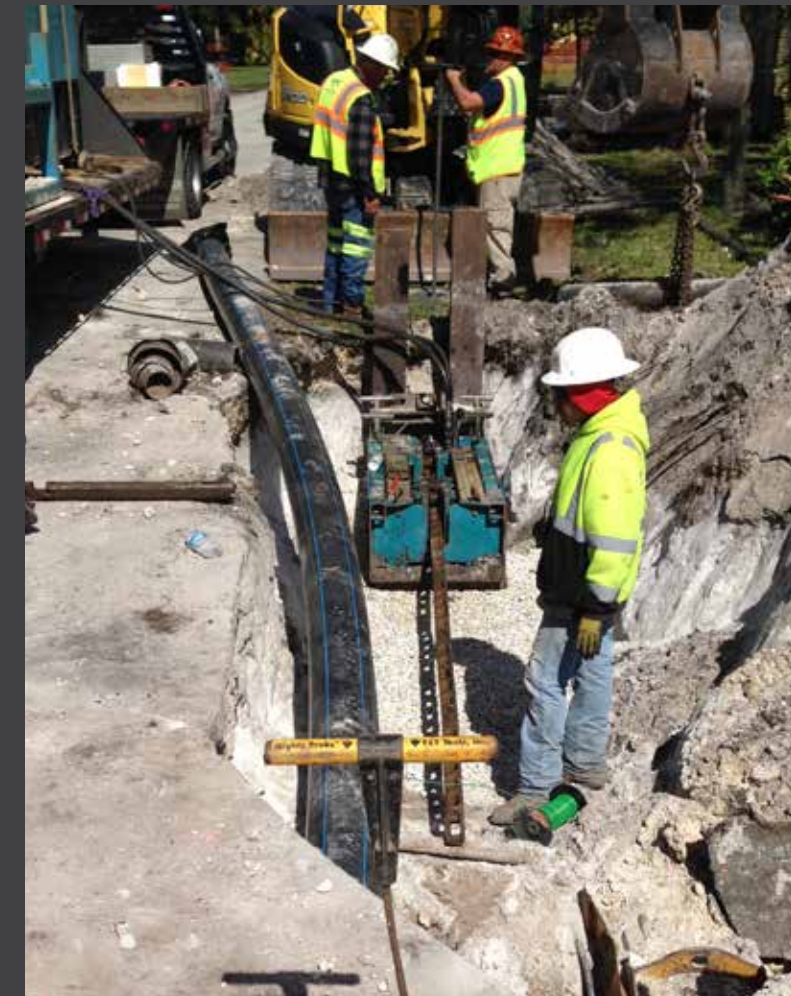
- WaterGEMS/SewerGEMS
- WaterCAD/SewerCAD
- Innovyze (InfoWater/InfoSewer)
- H2ONET/H2OMAP



Fort Lauderdale Emergency Forcemain Rehabilitation, Fort Lauderdale, FL



Lift Station 3, Pompano Beach, FL



Pipe Bursting Installation Pit, Wilton Manors, FL

Water and Wastewater Master Planning
Pump Station Design and Rehabilitation
Water Supply, Treatment, and Distribution Design
Sanitary Sewer, Treatment and Distribution Design
Reclaimed Water Design
Trenchless Technology



MARKETS

neighborhood improvements



DESIGN-BUILD SERVICES

Twenty years ago, a tug pushing a barge across Biscayne Bay ran into an access structure sitting atop a shallowly buried 72" force main. The resulting damage caused a spill of over 11 million gallons into the Outstanding Florida Waters. The repair was performed by a design-build team, with CMA serving as the engineer of record for this difficult repair. Since that project, CMA has served as the engineer for over \$200M in design-build projects, ranging from those that were based on performance specifications, like the \$100M Outer Cudjoe Wastewater Collection Project in the Florida Keys, to those that operated under emergency timelines, like the Emergency 48" Force Main Bypass Project in Fort Lauderdale.

Design-Build, when properly scoped, procured, and managed, is an incredibly effective tool for utility owners to take the best ideas from both the design and construction world, putting a specific emphasis on efficiency with regards to both schedule and budget. CMA has effectively worked with a wide variety of contractors and has delivered highly successful projects, accomplishing this through strong relationships, stronger agreements, and fundamental core values of transparency and integrity. Offering owner's representative, design criteria package, and engineer of record services, CMA participates in the full cycle of a design-build project, providing many options for our clients.

Sunset Islands III and IV NIPs, Miami Beach, FL



Broadview Park Neighborhood Improvement Plan, Fort Lauderdale, FL

CMA has been utilizing trenchless technologies for over 15 years. Examples include:

- HDD (Horizontal Directional Drill)
- Swagelining (Close Compression Fit Liner)
- Pipe Bursting
- CIPP (Cured in Place Pipe Lining)



Cudjoe Regional Wastewater Collection, Florida Keys, Outer Islands, FL



MARKETS

public space design



Improving public spaces activates neighborhoods and encourages economic and social growth. CMA understands that successful urban environments are composed of numerous elements that must be seamlessly integrated to create an active public space. We strive to create public spaces that not only accommodate pedestrians, but multiple methods of transportation including bicyclists, vehicular, and mass transit. Our designs bring identity and clarity to public spaces with landscaping, wayfinding systems, and thoughtful circulation for both vehicles and pedestrians.

The Art Walk, Coral Springs, FL



City Center, Miami Beach, FL



Euclid Avenue, Miami Beach, FL

Streetscape Design
Urban Planning and Design
Public Plazas
Pedestrians Malls
Linear Parks
Urban Stormwater Design
Roadway Design
Utility Coordination
Utility Design



MARKETS
transportation



Great roadways form the glue that holds a successful community together by enabling safe and convenient transportation for both vehicles and pedestrians. Our philosophy of transportation design involves organizing a hierarchy of streets to respond to the varying urban use and density conditions and establishing appropriate standards for each street type. CMA engineers and designs for safety, longevity, and sustainability, creating roadways that will foster active communities. CMA has designed hundreds of miles of roads throughout Florida in the last couple of decades.

City of Margate Roundabout, Margate, FL



Fort Lauderdale International Airport, Fort Lauderdale, FL



Fort Lauderdale Beach, Fort Lauderdale, FL

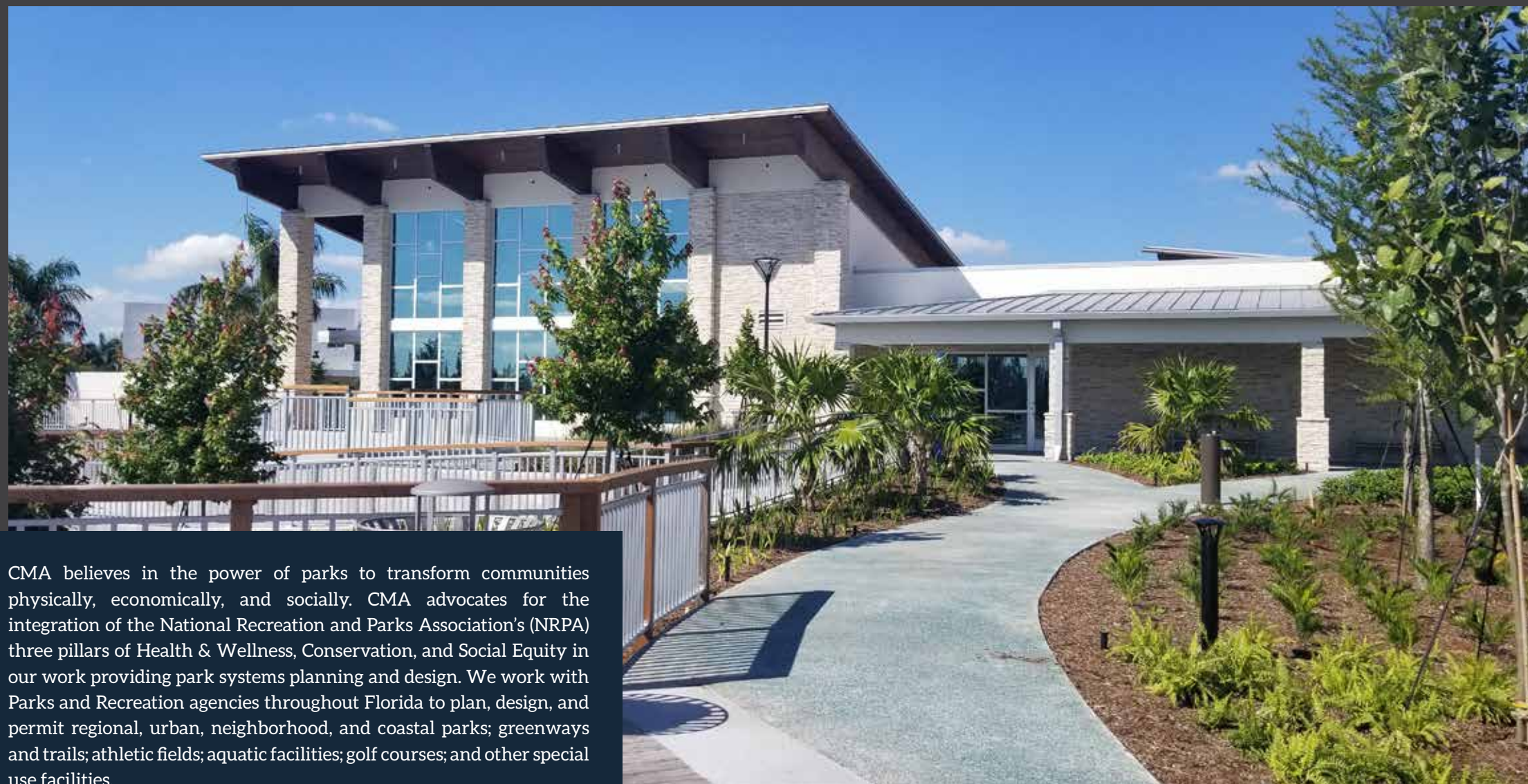


Brightline Station, West Palm Beach, FL

Roadways
Highways
Aviation
Transit
Rail
Parking



MARKETS parks & recreation



Doral Glades Park, Doral, FL

CMA believes in the power of parks to transform communities physically, economically, and socially. CMA advocates for the integration of the National Recreation and Parks Association's (NRPA) three pillars of Health & Wellness, Conservation, and Social Equity in our work providing park systems planning and design. We work with Parks and Recreation agencies throughout Florida to plan, design, and permit regional, urban, neighborhood, and coastal parks; greenways and trails; athletic fields; aquatic facilities; golf courses; and other special use facilities.



Mini-Park, Miami, FL



Orange Bowl Field at Glade Pioneer Park, Belle Glade, FL



Miami Springs Aquatic Facility, Miami Springs, FL



Westside Park, Deerfield Beach, FL

“CMA believes in the power of parks to transform communities physically, economically, and socially.”



MARKETS

land development



CMA understands that success in land development depends on delivering timely and responsive professional service and high-quality design. CMA provides services to private development clients in Commercial, Hospitality, Healthcare, Industrial, Mixed-Use, and Residential market sectors. Our recent experience includes Transit Oriented Development projects connected by high-speed rail and projects funded through Public-Private Partnerships. Regardless of the market sector, we understand that timeliness is critical to the success of land development projects. CMA leverages our experience and relationships to receive quick permitting and entitlement approvals. CMA understands the complexities of developing commercial and retail projects and pledge our experience and dedicated team to make sure we meet project schedules with the goal of on time certificates of occupancy. From the inception of a project, CMA works closely with our clients to determine the best path through design and construction administration to meet and beat schedules, assuring a quality project in the field.



Gainesville CRA Hawthorne Road Visioning & Infrastructure Assessment,
Gainesville, FL



Crown Center, Fort Lauderdale, FL



Cambio Site Plan, Mexico



St. Cloud Commons, Kissimmee, FL



Arden Phase II+III Irrigation, Palm Beach County, FL



Punta Limon, Panama



MARKETS

government services



Our fundamental business practice is to create and maintain long term relationships with our public, private and institutional clientele. CMA has more than 60 current municipal and county continuing service contracts in Florida. Some of these services under these contracts range from planning, design, construction administration, landscape architecture, underground and above ground facilities such as stormwater drainage systems, sanitary sewer collection and transmission systems, water distribution systems, roadways, streetscaping, traffic controls, parking facilities, lighting, and marine facilities.

Shark Wake Park, West Palm Beach, FL



Fire Station No. 35, Fort Lauderdale, FL



Marathon City Hall, Marathon, FL



Lincoln Road, Miami Beach, FL



South Pointe Right-of-Way Improvement Project, Miami Beach, FL

Municipal Plan Review Status
Project Management
Program Management
City Engineer Related Services
Value Engineer
Stormwater Master Planning
Utility Master Planning
Street Tree Master Planning
Parks and Recreation Master Planning
Utility Rate Studies
CIP Project Design Management
Asset Management



MARKETS

insitutional & educational



Our team has a multitude of experience in the planning and design of institutional and educational facilities of all kinds. These types of facilities have diverse and specific needs that often change over time. We strive to create spaces that will be reliable yet dynamic and withstand the test of time both in safety and in style. The CMA team has designed and assisted in the construction management of dozens of healthcare facilities including brand new hospitals, hospital additions, emergency rooms, medical office buildings, long-term acute care centers, skilled nursing facilities, helipad designs and ADA accessible routes. Our team also has experience in designing several university campus master plans, campus housing facilities, campus sports and recreation facilities, and developing on-campus solutions.

FAU Parliament Hall, Boca Raton, FL



FIU Student Housing, North Miami, FL



Family Medical Center, Big Cypress Reservation, FL



FAU Garage, Boca Raton, FL



UM Cox Classroom, Coral Gables, FL

University Campus Landscape and Irrigation Design
K-12 Campus Landscape and Irrigation Design
Healthcare Facilities
Religious Institutions
Recreational Facilities
Research Institutions
Utility Master Planning
Roadway Master Plan

OUR IMPACT in our profession





OUR IMPACT in our community



The Palm Beach Post REAL NEWS STARTS HERE Friday, May 10, 2019 83

IN YOUR COMMUNITY

LAKE WORTH BEACH MONDAY JUPITER TUESDAY WELLINGTON WEDNESDAY BOYNTON BEACH THURSDAY PALM BEACH GARDENS FRIDAY WEST PALM BEACH SATURDAY

IN BRIEF

LOXAHATCHEE
Rare antelope calf born at Lion Country Safari

Lion Country Safari welcomed its own baby Monday, and while it may not be royal, it is a very special birth.

A 15-pound, scimitar-horned oryx calf, the second calf to join the herd this year, is visible in a maternity area, where it will spend some quality time with Mom before joining the rest of the herd. Lion Country Safari now cares for a herd of 26 of these antelopes.

Scimitar-horned oryx have been classed as "extinct in the wild" by the International Union for the Conservation of Nature (IUCN) since 2000. The rare species' reproduction is part of Lion Country Safari's participation in a number of Species Survival Plans (SSPs), a series of conservation and breeding programs for threatened and endangered species overseen by the Association of Zoos and Aquariums.

Reintroduction efforts began in 2016 to reestablish the population in Africa, with about 100 oryx currently being closely monitored in a reserve in Chad. Healthy, genetically viable populations are crucial to reintroduction efforts such as this one.

At birth, oryx calves weigh approximately 15 to 20 pounds (6.8 to 9.1 kg), but as adults, can weigh up to 350 pounds (160 kg). Gestation is 8 to 9 months, after which a single calf is produced.

For more information, call 561-793-1084 or visit lioncountry.com.

WEST PALM BEACH
League of Women Voters hosts gun safety event

The League of Women Voters of Palm Beach County (LWVPC) is inviting the public to an informative discussion concerning gun safety from 10 to 11:30 a.m. Saturday at the STEM Education Center, 4502 Fisher Trail N., where release says.

Speakers include Barbara Markley, Esq., co-chair of the Gun Safety Committee for the League of Women Voters of Broward County; Monica Mowhan, Ph.D., lead criminologist and sociologist Tom Cabor, Ph.D., author of "Punching: Solving America's Gun Violence Crisis."

The event is free. For more information, visit lwvpc.org. Staff report

Can sculptures at Gardens Mall to raise awareness of hunger

By Jodie Wagner
Palm Beach Post

After a one-year hiatus, Construction returned Monday to The Gardens Mall.

A partnership between local businesses, the mall and the Palm Beach County Food Bank, the two-week exhibition of sculptures created from non-perishable food items brings attention to food insecurity in Palm Beach County.

"It's evident we're talking about food, because that's how we're building the structures," said Karen Erren, executive director for the Palm Beach County Food Bank. "Our goal is to offer our community, who may not be aware of the fact that there's hunger in Palm Beach County, to think about that."

Architects, designers, builders and other teams will compete to create giant works of sculptural art, based on the theme of "CANstruction." Each team partnered with a retailer from The Gardens Mall as inspiration for the design.

Seven teams are competing this year — the exhibition's sixth — with a panel of celebrity judges determining the winner.

The teams are Chen Moore & Associates and Johnson-Davis Inc. with PacSun; The Corradino Group and Ranger Construction with Lilly Pulitzer; Hedrick Brothers Construction with Vineyard Vines; Inlet Grove Community High School with Godiva; Leo A Daly and The Weitz Company with Michael Kors; Pratt & Whitney with Tommy Bahama; Roger Dean Chevrolet Stadium and Agilis Engineering Inc. with L'Occitane.

Teams began building their sculptures at 6 p.m. Sunday — just after the mall closed — and were given 12 hours to complete them. Erren said. The exhibit runs through May 16, and will take place during The Gardens Mall's normal business hours. It is free.

"Food banks are highly dependent on donated food. In Palm Beach County, we're super lucky that six months out of the year, that includes an incredible quantity of fresh fruits and vegetables. We have consistent donors that ensure we get high-quality food. But it's never enough. Construction offers an additional opportunity to bring really high-quality food to our neighbors in need."

Karen Erren

At the end of the exhibition, each one of the Construction sculptures is "deconstructed," and all of the food is donated to the Palm Beach County Food Bank.

During the last Construction in 2017, more than 32,000 pounds of food was collected from the sculptures and distributed to the community.

"One of the great benefits of Construction is the quality of food it offers," Erren said. "Food banks are highly dependent on donated food. In Palm Beach County, we're super lucky that six months out of the year, that includes an incredible quantity of fresh fruits and vegetables. We have consistent donors that ensure we get high-quality food. But it's never enough. Construction offers an additional opportunity to bring really high-quality food to our neighbors in need."

For more information on the Palm Beach County Food Bank, Construction or for sponsorship opportunities, contact Gerardo Cabrera at 561-670-2518, ext. 300, or gerardo@pbcfb.org. jwagner@pbcpost.com

2019 Teams

Chen Moore & Associates and Johnson-Davis Inc. with PacSun
Roger Dean Chevrolet Stadium and Agilis Engineering Inc. with L'Occitane
Hedrick Brothers Construction with Lilly Pulitzer
Vineyard Vines, Inlet Grove Community High School with Godiva
Leo A Daly and The Weitz Company with Michael Kors
Pratt & Whitney with Tommy Bahama

Food Bank development officer Gerardo Cabrera prepares Construction 2019 display for judging on Monday inside The Gardens Mall.

Food Bank development officer Gerardo Cabrera prepares Construction 2019 display for judging on Monday inside The Gardens Mall.



OUR IMPACT to our clients



EDITION 14
VOLUME 1
SPRING 2020

QUARTERLY

New Employees **2**
United Way **2**

Adopt a Family **2**
ASCE Panel **2**
SFBJ Award **3**

Holiday Party **3**
Future Cities **3**

Dedication at NASA
CMA President Peter Moore, P.E., F.ASCE, ENV SP, LEED AP presented a dedication at NASA of the Vehicle Assembly Building designating it as an ASCE National Historic Landmark to the NASA Director on January 12, 2020. Kevin J. Thibault, Secretary of the Florida Department of Transportation, CMA Vice President Jose Acosta, P.E., F.ASCE, CMA Director of Water Resources/Senior Engineer Brent Whitfield, P.E., ENV SP, Senior Engineer Rob Best, P.E. and CMA Associate Engineer Carlos Tijerino were also in attendance. The timing of this dedication was fortuitous as CMA recently began working at NASA.

President's Message

"Why Newsletters Suck And How To Do Successful Email Marketing" was the title of a Forbes article written two years ago – and here is CMA sending out a newsletter in 2020. When we started this publication 14 years ago, we always intended it to be like us, high quality, but just a little different. And whether you are receiving this for the first time or you've been getting them quarterly for the last 14 years, we're happy to share that difference with you.

For years I wrote notes that some considered too personal to lead off our CMA Quarterly newsletter. Readers were with me when I managed a potential cancer diagnosis (thank goodness it wasn't) and also with me during a time in my life when I reached a milestone: it was my 43rd birthday as well as the first birthday that I was older than my father when he passed. That weekend was also my first Father's Day as a dad to my newborn daughter. Why did I write about my personal life and experiences? I can hear Dr. Chen pounding on the table to make us remember the mantra – THIS IS A PEOPLE BUSINESS. Everything we do, from the time we spend working and away from our families to the relationships required to accomplish our work is absolutely personal. (more about this in our blog)

About two years ago, we eliminated my personal notes in the newsletter in favor of me writing on our company blog. That was to give more room to hear about our great people and less room to hearing my ramblings. This is just as personal with our team as they are with me.

So why did we decide to add my note back into this edition? Well, because once again things are personal. We've rebranded our firm to "cma" shortening the previous name from Chen Moore and Associates. We're still officially incorporated as Chen Moore and Associates, but we've rebranded to simplify things for our partners and clients. Believe me, having your name on a firm is a very personal commitment, but we felt it was the time right to rebrand.

Why now? Because many of those that have known us for 20+ years equated Chen Moore to mean Ben and I sitting in the 600 square foot office the firm started with in Plantation, Florida in 1986. Many of those that have met us recently have the perception that if Dr. Chen or Mr. Moore aren't in the room, that no decisions can be made. We rebranded because we are an amazing, dynamic statewide firm, with over 35 engineers, over a dozen landscape architects, with supporting construction administrators, designers and administrative staff. We rebranded because why we still have a substantial practice in our original water and sewer market, we're just as likely to lead fantastic projects in aviation, land development, parks and recreation, transportation and, most recently, ports. "cma" is a growing, dynamic firm – respectful of our past, passionate about our current work and leading the way into the future.

I'll continue this discussion at our blog located at: www.chenmoore.com/blog

As always, it is a pleasure to share all the amazing things we do here at "cma" and we look forward to working with you soon.

CIVIL Engineering | Landscape Architecture | Transportation | Environmental | Planning



South Pointe Phase III, IV and V Right-of-Way Improvements, Miami Beach, FL



North Dixie Highway Streetscape Improvements, Wilton Manors, FL



Worth Avenue (Before), Town of Palm Beach, FL



Worth Avenue (After), Town of Palm Beach, FL



Vizcayne Building Pool, Downtown Miami, FL

OUR IMPACT

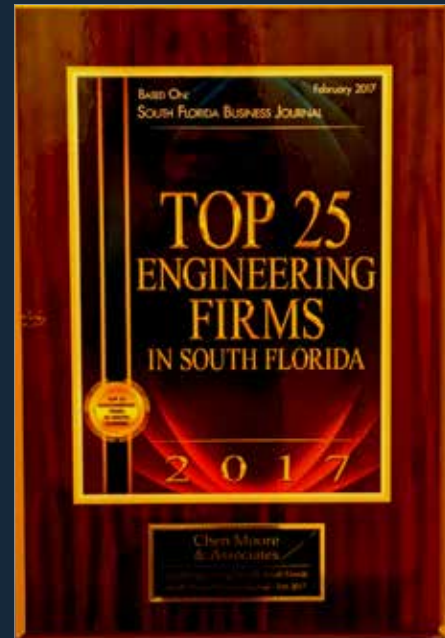
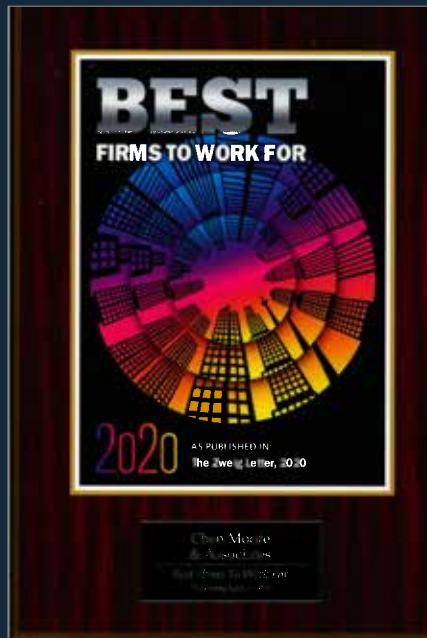
At CMA we believe in people. We strive to establish a sense of pride and loyalty in our employees by maintaining a tradition of excellence in our work and a sense of family in our culture. Our employees are encouraged to reach their full potential both professionally and personally through participation in professional societies, local and regional philanthropic groups, and company-sponsored social events. We work hard, we play hard, and we love to give back.

OUR WORK

At CMA, we take pride in our ability to make a difference in our communities. We create spaces that impact our everyday lives through planning, engineering, and design. Our diverse experience and expertise give us the tools we need to provide professional services across a wide variety of market sectors.

OUR TEAM

CMA is privately held by a group of eleven owners and operated by an executive committee. The company is supported by a Board of Directors with experts from various industries and backgrounds. The firm is led by a group of trained engineering and design professionals with diverse talents and years of experience. This leadership creates a dynamic and powerful team that serves as both manager and mentor to their growing firm services across a wide variety of market sectors.



BEST PLACE TO WORK



Named 'Best Places to Work For' nationally by the Zweig Group in the Multidiscipline Firm Category from 2008-2010 and 2014-2020.

Named to the 'Hot Firm's List' nationally by the Zweig Group from 2007-2011, 2014, 2016-2020.

CMA is regularly recognized as a 'Best Firm to Work For' by the South Florida Business Journal, Civil + Structural Engineer, ENR Southeast, and various local branches of the American Society of Civil Engineers.



